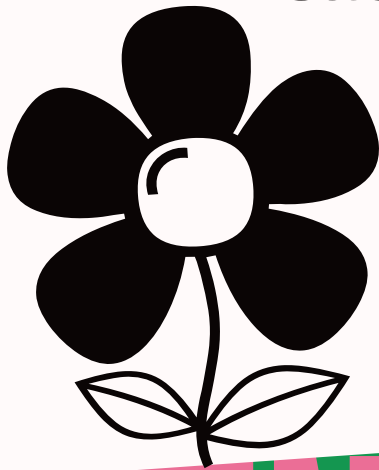


Cuchi



**Zenit**

 **Designed by  
Carlos Campos  
in 2023** 

**ZENIT TYPEFACE SPECIMEN**  
**CUCHIQUETIPO.COM**

**©2023. ALL RIGHTS RESERVED.**

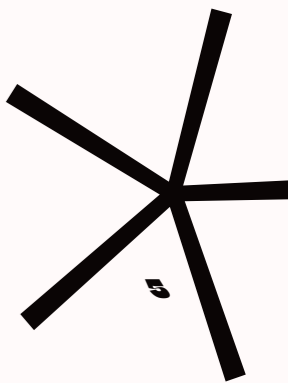


mit Zenit Zenit

Designed by  
Carlos Campos  
in 2023



**OPENTYPE FONT**  
**499 GLYPHS**  
**2 AXES / 9 INSTANCES**  
**438 CHARACTERS**  
**11 LAYOUT FEATURES**  
**37 LANGUAGES**



// I LOVE  
YOU ♡  
TO THE  
MOON  
AND  
BACK //

👉 AIP  
OL 🤪  
SOY  
UP 🌟



## 50/55 pt. English

☞ ZENITH

/ˈzɛ-nəθ/

The point of the celestial sphere that is directly opposite the "nadir" and vertically above the observer<sup>1</sup>.  
The highest point reached (...)

## 40/45 pt. Deutsch

☞ ZENITH

/ˈzɛ-nəθ/ Der punkt der Himmelskugel, der dem "nadir" direkt gegenüberliegt und senkrecht über dem beobachter steht<sup>1</sup>.

## 30/32 pt. Iceland

☞ ZENITH /ˈzɛ-nəθ/

Aðalatriðið himinhvolfið beint á mótí „nadir“ og lóðrétt fyrir ofan áhorfandann<sup>1</sup>. Hæsta punkti sem himintungl náði á himnum<sup>2</sup>. Niðurpunktur<sup>3</sup>.



zenit zenit zenit  
t zenit oo  
nit zenit  
nit zenit  
zenit zenit  
zenit zenit



# PUNCTUATION

.,;...!i?i..\*!?!A/\#(){}  
[]\_—,“”»»“”””@'¢§©  
®™°|•••e

## MATHS

+ - x ÷ = # > < > < ± ≈ ~ ^  
∞ ∫ ∑ √ ∕ ∂ % ‰

## CURRENCY

¢ \$ € ₣ ₧ ¥

## INDICATIONS

### Arrows

↑ ↗ → ↘ ↓ ↙ ← ↖

### Lifts

↕ ↔

## GEOMETRICS

■ □ ◊ ◈ ○ ●  
▲ ▶ ▷ ▼ ◀ ◁

## EMOTICONS

Mmmmm 😊  
Hell, yes! 😄  
Fail 😞  
Tell me... 👂  
✓ Good job!  
✗ Not good  
✍ Write here  
🌸 Ohhhhh...  
♥ Lovely  
💥 Buuum!

## GREEK

Δ Ω μ π

## STYLISTIC ALT

a → a e → e g → g E → E & → &

## CASE SENSITIVE FORM

Œ (œi@lower!?) | } → Œ (Ëi@CAPS!?) | }

## LOCALIZED FORM

Catalan: mil·lenari → mil·lenari  
FILLOXERA → FILLOXERA  
Rom/Mold: poliție → poliție  
Tur/Aze/Ukr: ІВИ ГҮНЛЕР → ІВИ ГҮНЛЕР

## FIGURES

Sup 0123456789 Sub 0123456789  
Fractions 1/2 → ½ ¼ ¾ ⅛ ⅜ ⅝ ⅞  
Ordinals 1a → 1ª 1o → 1º

## LIGATURES

Æ Œ œ oe ff fi fj fl tt  
TH Th N° Cuchi



5.9 × 10<sup>24</sup> kg<sup>®</sup>  Thē  
 // dr̄eam // R @ LI♥E! ?  
 ♀ A T H S f I N D E R S ~  
 ✓ F°r thē p̂en Cfit \*  
 OF > ALL ☺ / N J A E S O \*  
 # „ \$ P A © | & C r a f t “



CUCHIQUE  
TYPEFACE

Carlos Campos  
©2023



**OK!**

**HOUSTON**

*We've have had a*

**PROBLEM**

**here**

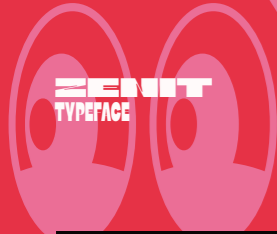
...



CUCHIQUE  
TYPEFACE

Carlos Campos  
©2023

**OK!**  
**HOUSTON**  
*We've have had a*  
**PROBLEM**  
**here**  
...



Perseverance

MERCURY

Endeavour

DRAGONFLY

Giacobini-Zinner

ATLANTIS

APOLLO-11

Curiosity

Pioneer

SURVEYOR

**Meteosat**  
**Harpálice**  
**Kallichore**  
**Megaclite**  
**Sputnik-1**  
**Hegémone**  
**Chang'e-4**  
**Praxídice**

**TOKAWA**  
**KALLIOPE**  
**CORONIS**  
**FREIA-76**  
**ELEKTRA**  
**ALETHEIA**  
**SIEGENA**  
**PALLAS-2**

**DUOUE**

EMIT  
TYPEFACE

**CHIANG**

**PADÁLKA**

**KONDANKOVA**

**TERESHKOVA**

**GAGARIN**

**DI**

**A**

**LAIKA**

**COLLIN**

**BUFF**

**ARMSTRONG**

**DUBROV**

**TAMAYO**

**JEMISO**

www

www.cuchic

# FILLER PLUG & AIR VENT

- ABOVE -20° F. USE OIL  
*SPEC MIL-H-5606\**
- BELOW -20° F. USE OIL  
MIL-H-5606 MIXED WITH  
NAPHTHA *SPEC TT.H-95\**

**CAUTION!** CLOSE AIR VENT  
WHEN NOT IN USE

# WARNING!

## TERMAL PROTECTED

1 / 35 H.P.	1PH. 115 V.A.C.	50 / 60 HZ
150 / 1800 R.P.M.		75 / 65 AMPS

CAP 5 MFD    370 VAC  
INSULATION CLASS B  
PART N° 252193



☺ ONE = SMALL  
STEP = P  
FORMAN,  
BUT ♥ ONE =  
GIANNI   
LEAP  
FOR MANKIND

Aeronauticals ▲

Heliophysics ◀

Engineering ▲

Hydraulics ▶

Aerodynamics ▲

Bureaucracy ▲

Mechanicals ◀

Geotechnical ▼

Headquarters ▶

INTERNATIONALSPACESTATION

UNITEDSTATESAIRFORCE

MERCURYREDSTONE

EXTRAVEHICULAR

INSTITUTIONAL

KHRUSCHEV

SCIENTIST

VOYAGER

SPACEX





**As "Zenith" means, in an astronomical context, the highest point reached by a celestial body, my new typeface raises its drawing for carry it to the highest expression.**

**In an effort to design a singular graphic and visual letters system, the contrasts and proportions of "Zenit" boosts up and are squeezed as much as possible, resulting in a very particular aesthetic, while still maintaining a certain grotesque reminiscence. Given its dynamic, postmodern, daring and futuristic style, "Zenit" is an ideal typeface for use in designs that want to discover new space worlds full of color and speed, still unexplored.**

***"Zenit, the typeface that rockets you!"***

**Designed by Carlos Campos.  
cuchi@cuchiquetipo.com**